

Erratum

Alpinumisoflavone suppresses tumour growth and metastasis of clear-cell renal cell carcinoma: Am J Cancer Res. 2017; 7(4): 999-1015

Tingting Wang¹, Yuhua Jiang², Lei Chu², Tianhui Wu³, Jie You¹

¹Shanghai Ninth People's Hospital, Shanghai Jiaotong University School of Medicine, Shanghai 200011, China; ²Tumor Hospital of Qingdao, Qingdao 266042, Shandong, China; ³Qingdao 5th People's Hospital, Qingdao 266002, Shandong, China

Received November 18, 2018; Accepted December 30, 2018; Epub February 1, 2019; Published February 15, 2019

In this article AJCR0048620 published in AJCR, The **Figures 6C** and **8C** is not accurate, they are replaced with the attached **Figures 6C** and **8C**, respectively. See the attached.

Address correspondence to: Jie You, Shanghai Ninth People's Hospital, Shanghai Jiaotong University School of Medicine, Shanghai 200011, China.
E-mail: jiyoushanghai@163.com

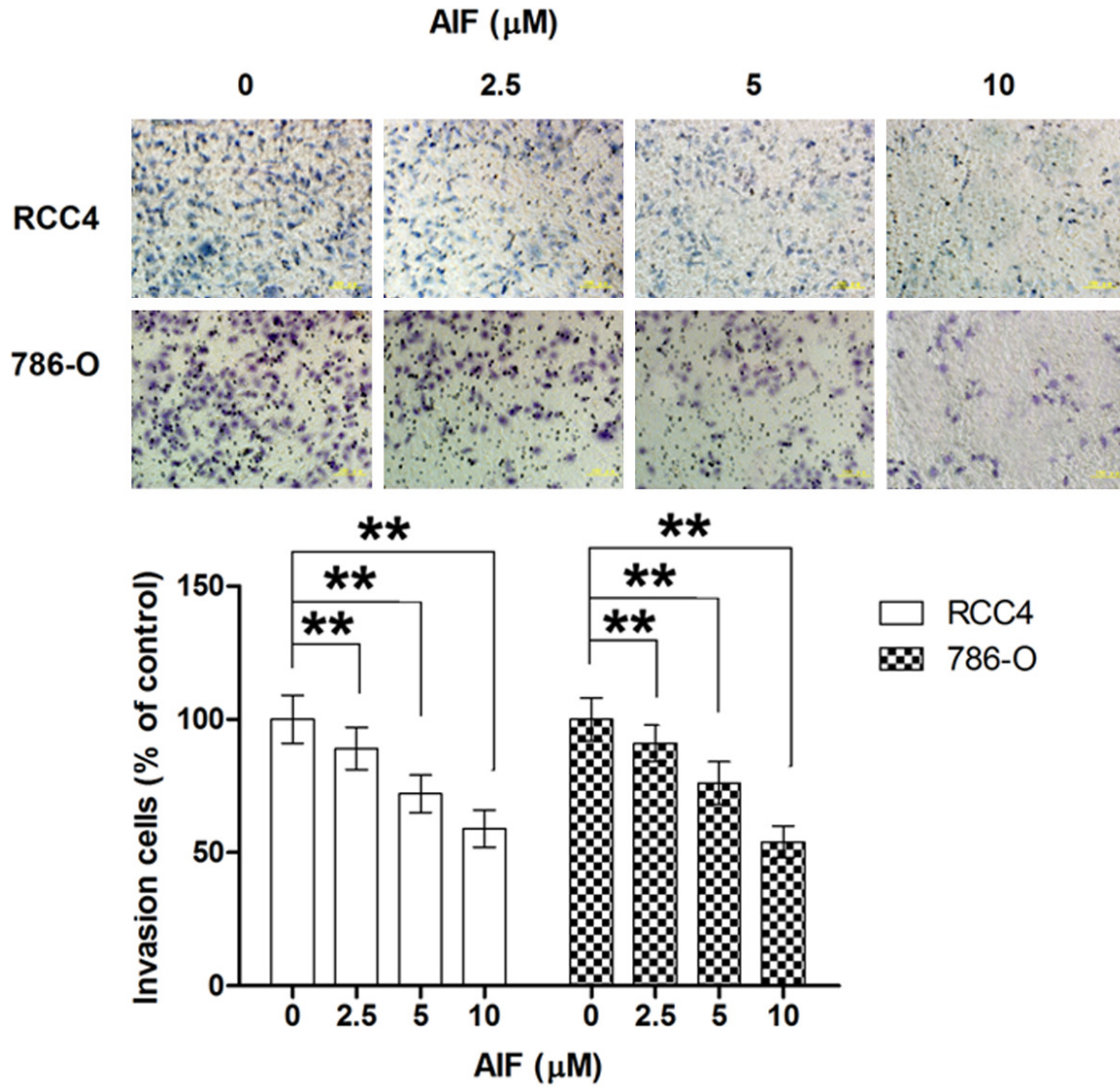


Figure 6C. AIF inhibits cell invasion in concentration-dependent manner. **P<0.01.

Alpinumisoflavone suppress renal cell carcinoma

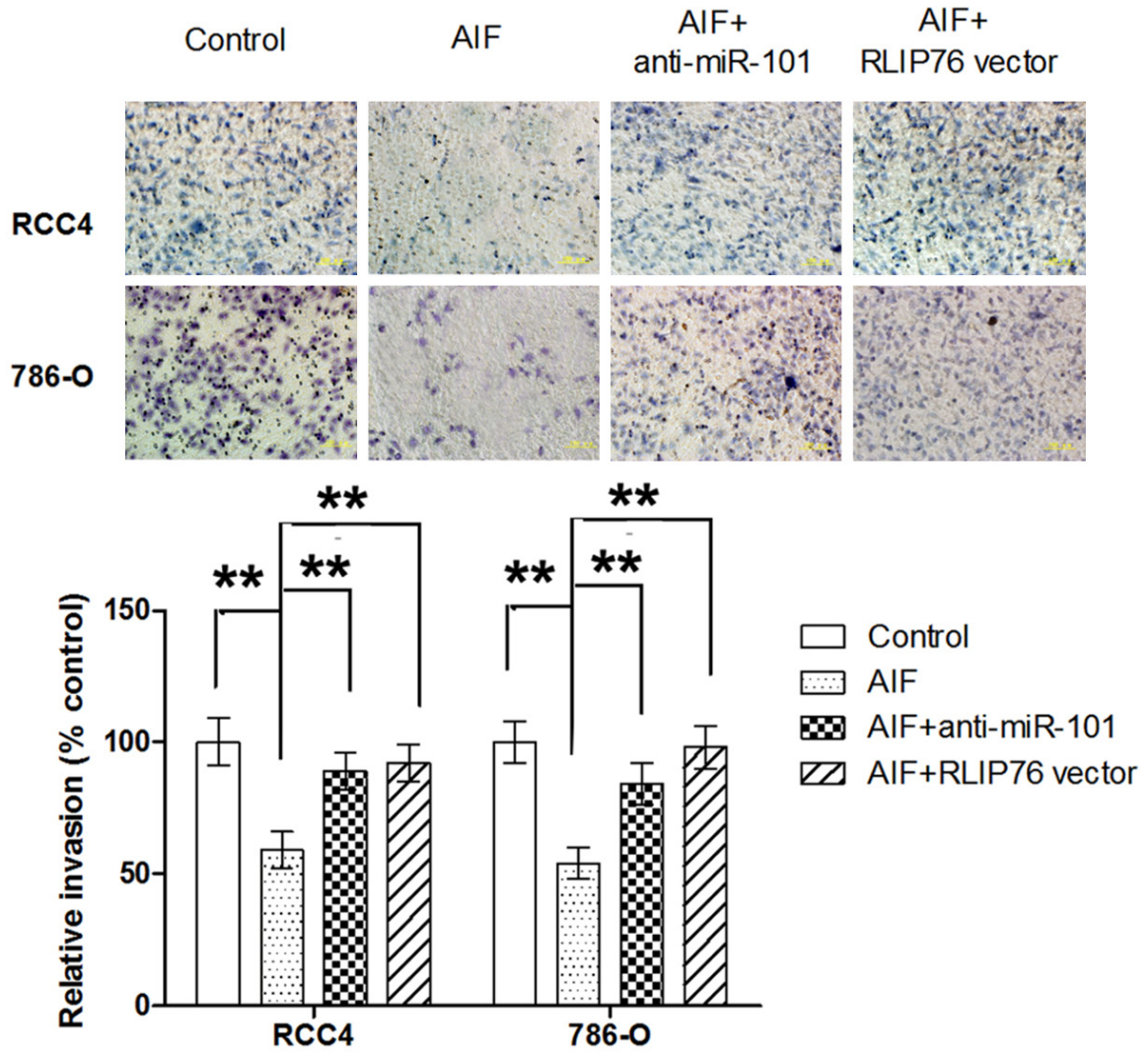


Figure 8C. Anti-miR-101 and RLIP76 overexpression attenuates the inhibitory effect of AIF on cell invasion in ccRCC cells.